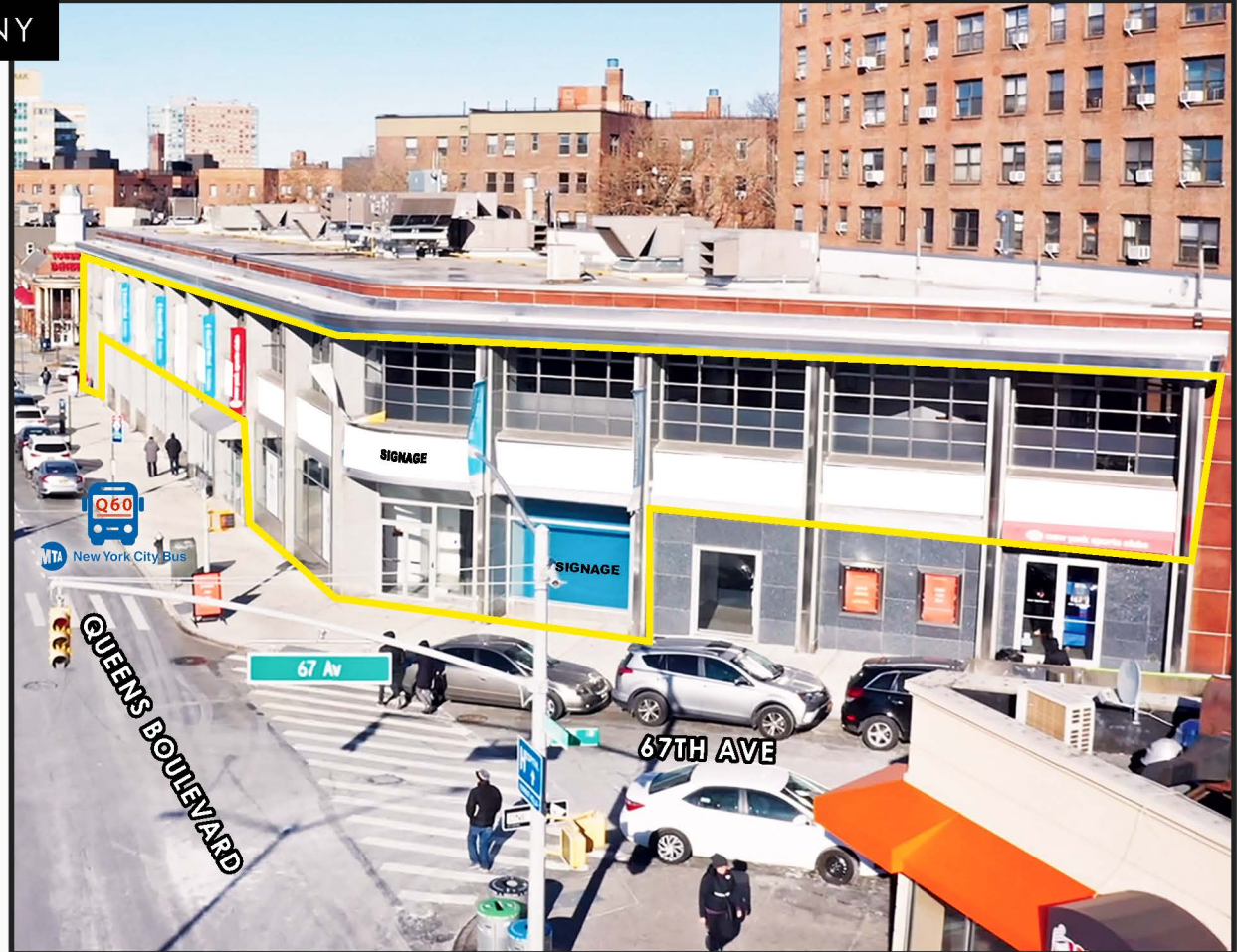


# 99-01 QUEENS BLVD

QUEENS BLVD AND 67TH AVENUE, QUEENS, NY



## AVAILABILITY

PREMISES	CEILING HEIGHT	AREA
WEST 1 GROUND FLOOR	+/-15'-0"	+/-839 SF.
WEST 2 GROUND FLOOR	+/-15'-0"	+/-398 SF.
EAST GROUND FLOOR	+/-15'-0"	+/-2,298 SF.
SECOND FLOOR	+/-13'-6"	+/-17,050 SF.

**TOTAL GROUND/SECOND FLOOR** +/-20,585 SF.

### BUILDING USES

- OFFICE
- MEDICAL OFFICE
- IMAGING CENTER
- RETAIL
- GYMNASIUM

### TENANTS

- MT. SINAI



- NYSC



### RADIUS



1 MILE  
3 MILE  
5 MILE

### POPULATION



139,000  
934,227  
2,100,000

### AVERAGE HOUSEHOLD INCOME



\$90,667  
\$83,859  
\$83,647

### SHOPPER MEDIAN AGE



41  
38  
37

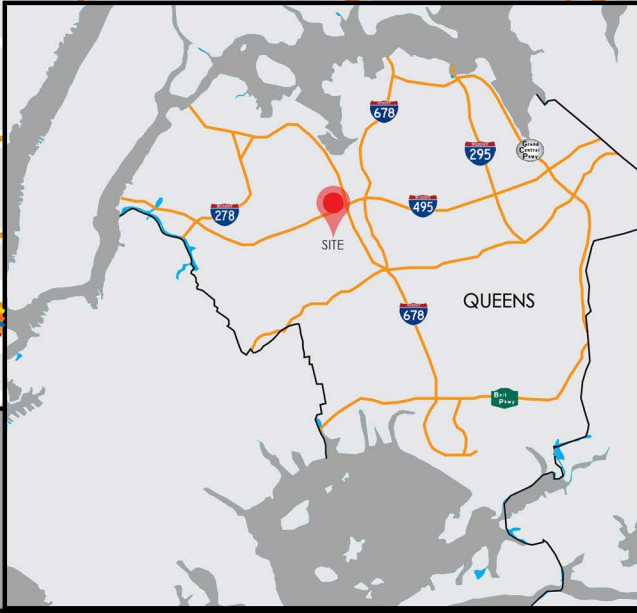
### # VISITS PER YEAR



271 K



Grand Central Pkwy



MAJOR  
RETAIL  
CORRIDOR

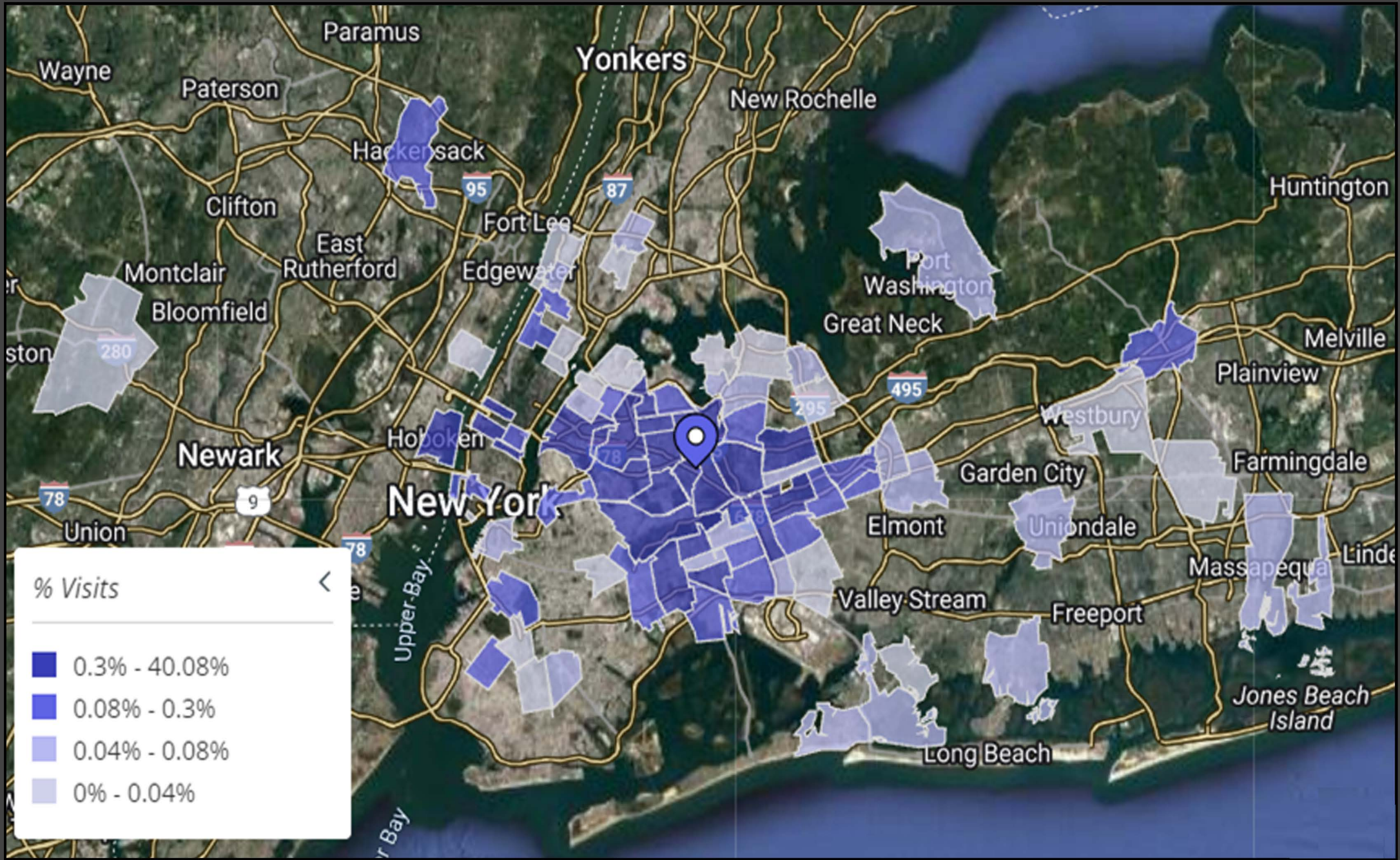
EASILY ACCESSIBLE  
FROM THE LONG  
ISLAND EXPRESSWAY  
AND GRAND CENTRAL



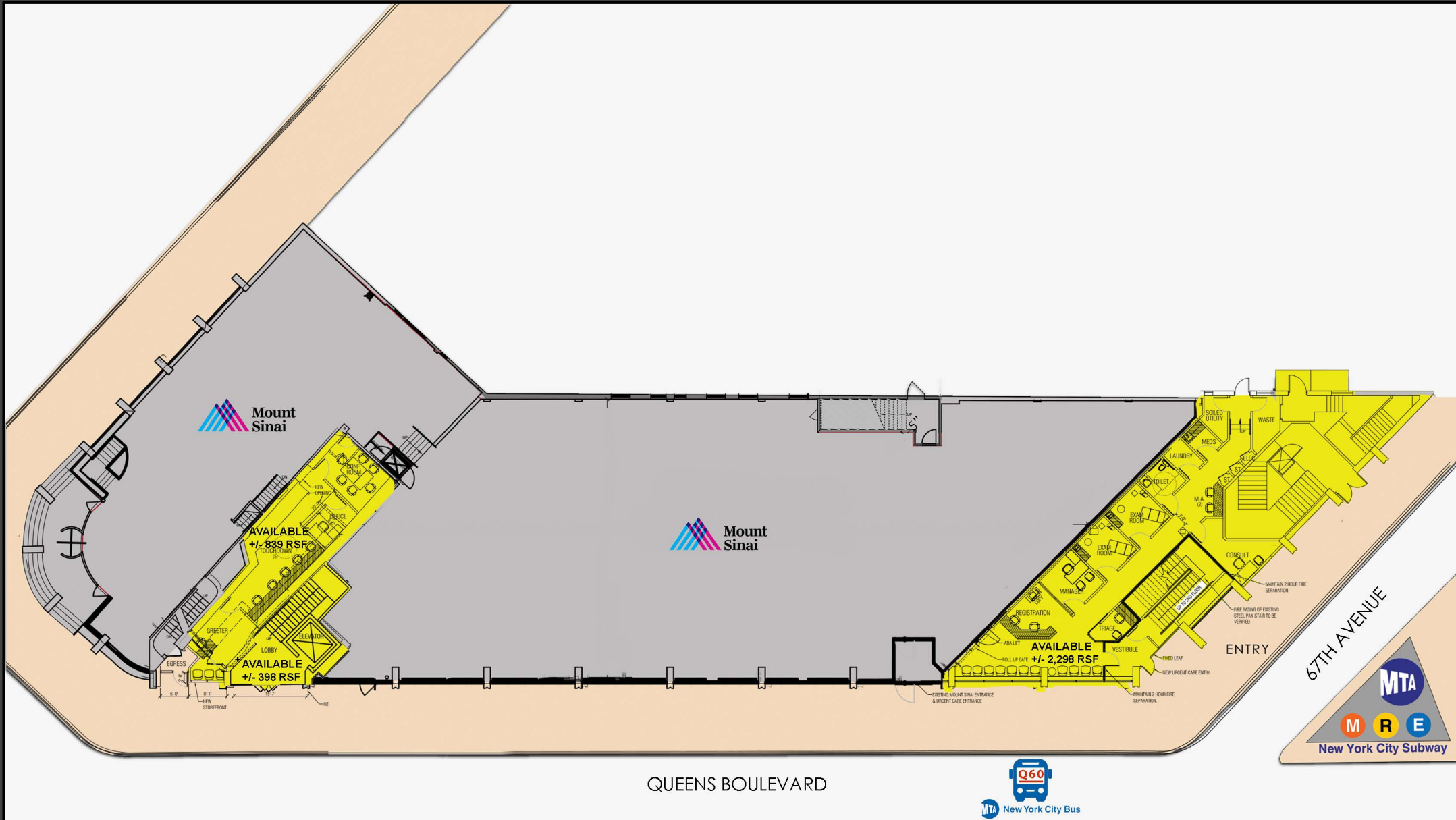
LOCATED ONE  
BLOCK FROM  
THE **E**, **M** & **R**  
SUBWAY LINES



**BDG** 99-01 QUEENS BLVD

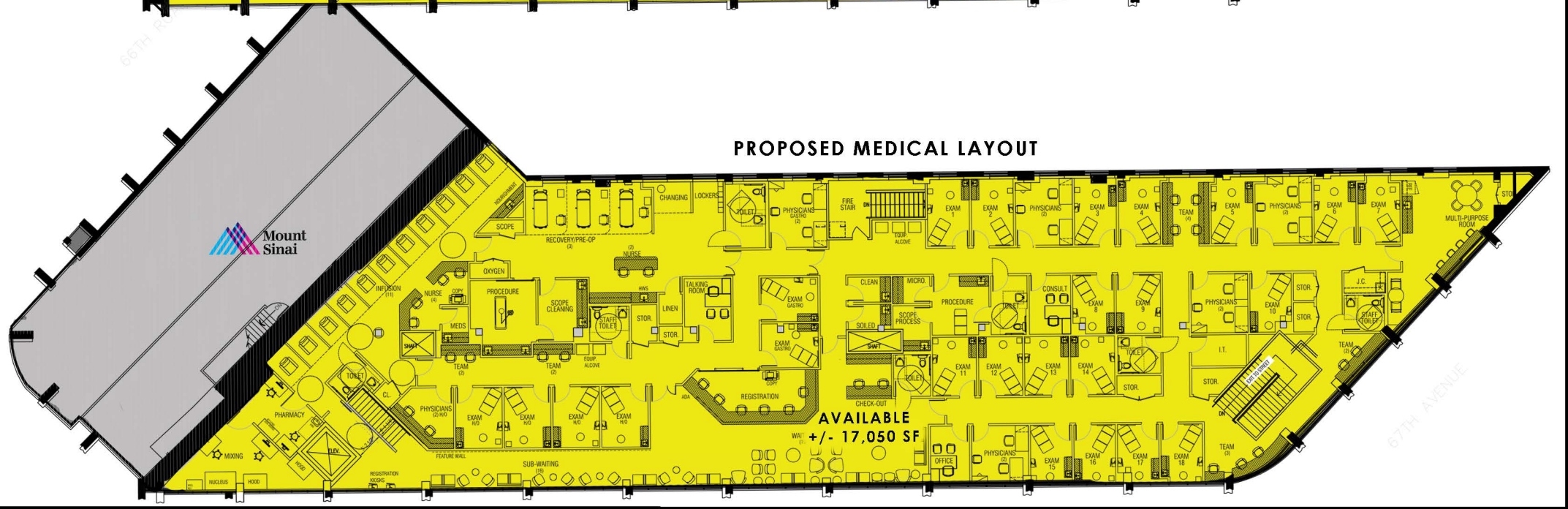
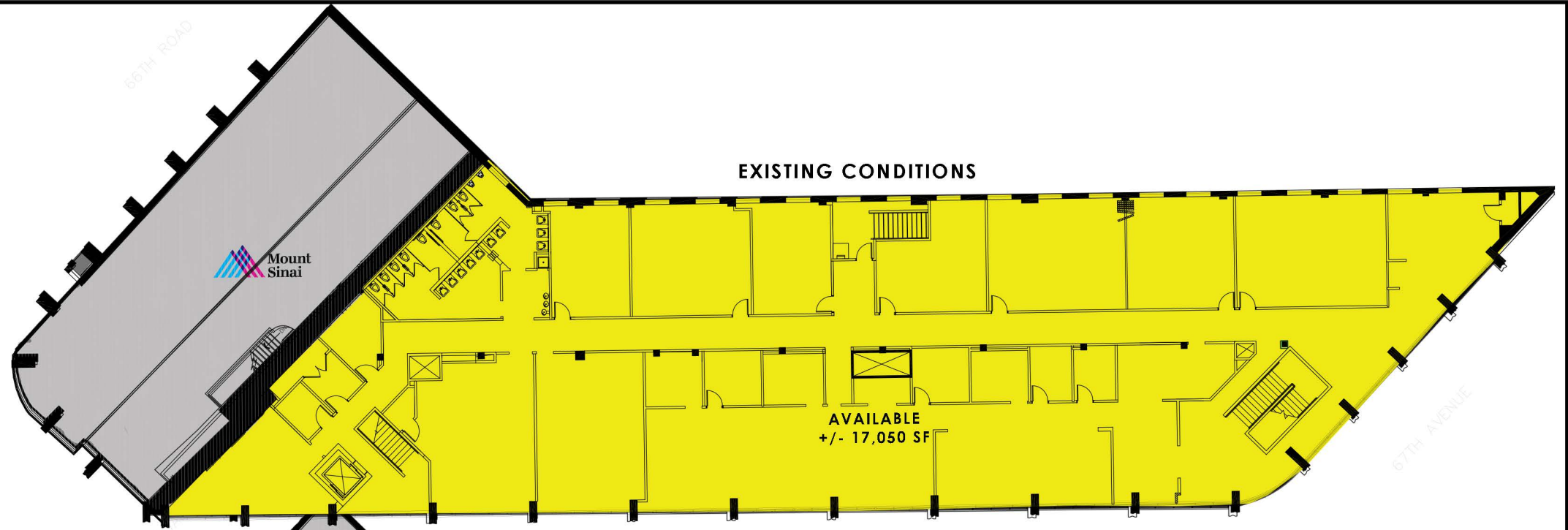


 **99-01 QUEENS BLVD**



GROUND FLOOR PLAN

**BDG** 99-01 QUEENS BLVD



**SECOND FLOOR PLAN**



99-01 QUEENS BLVD