

# THE CROSSINGS

SOUTHERN BLVD AND E163RD STREET, BRONX, NY



## AVAILABILITY

**GROUND FLOOR PLAN**  
RETAIL 1

**CEILING HEIGHT**  
+/-18'-6"

**AREA**  
+/-1,494 SF.



RADIUS



1 MILE  
3 MILE  
5 MILE

POPULATION



141,550  
1,100,000  
2,600,000

AVERAGE  
HOUSEHOLD  
INCOME



\$45,237  
\$52,755  
\$86,995

SHOPPER  
MEDIAN  
AGE

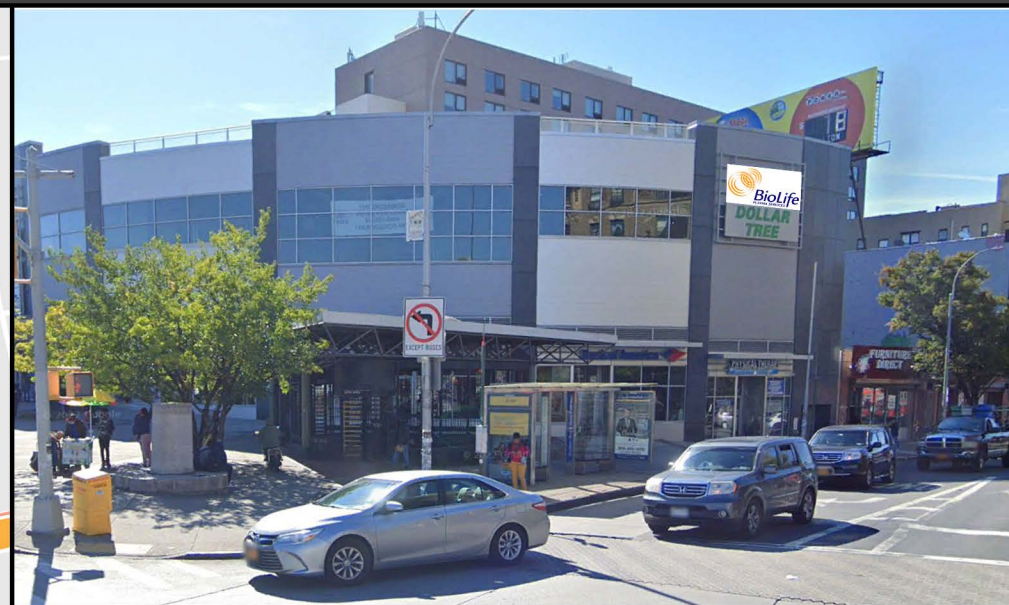
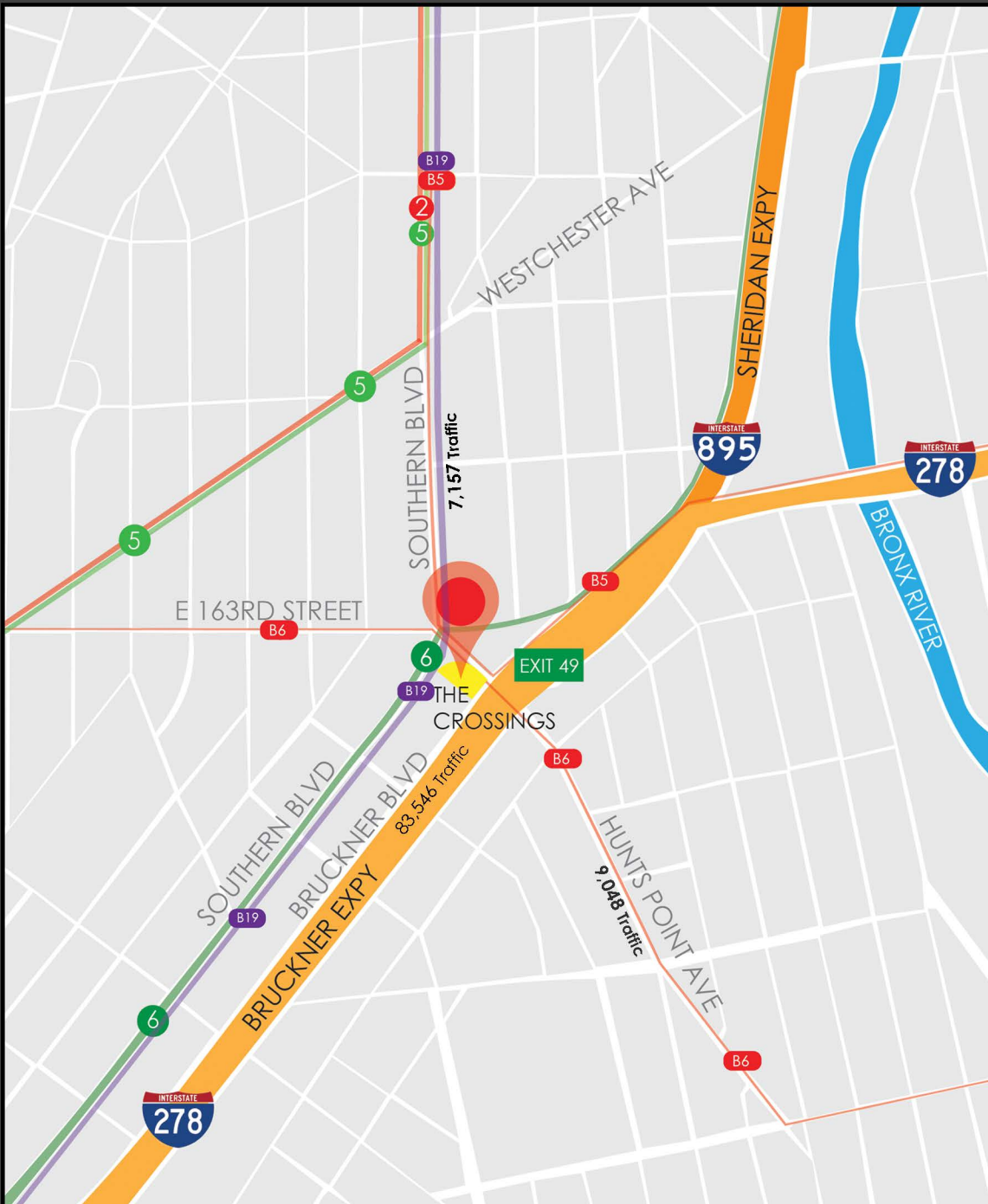


31  
32  
35

# VISITS  
PER YEAR



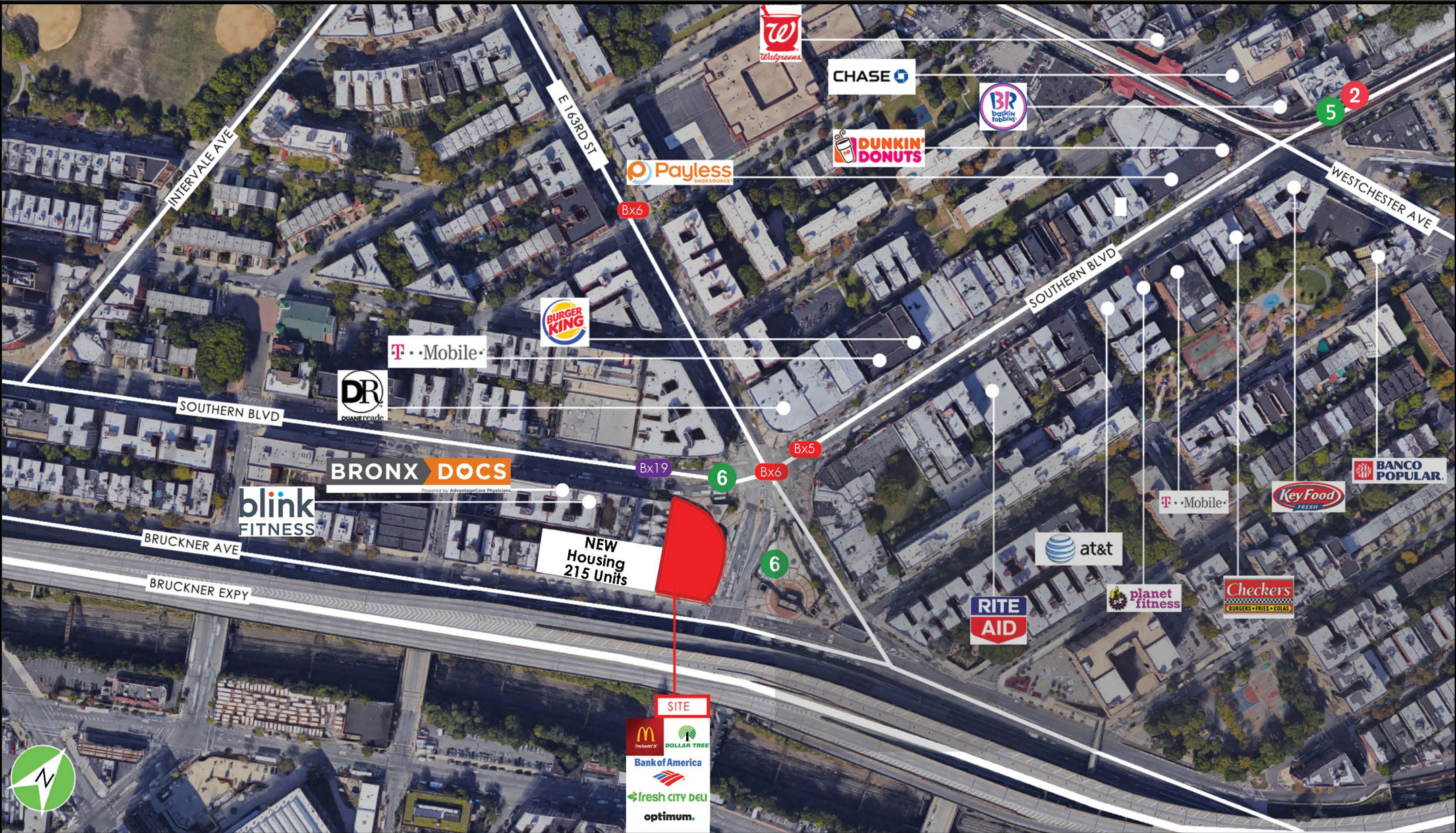
330 K




HIGHWAY VISIBILITY







 LOCATED AT THE HUNTS POINT AVE STATION

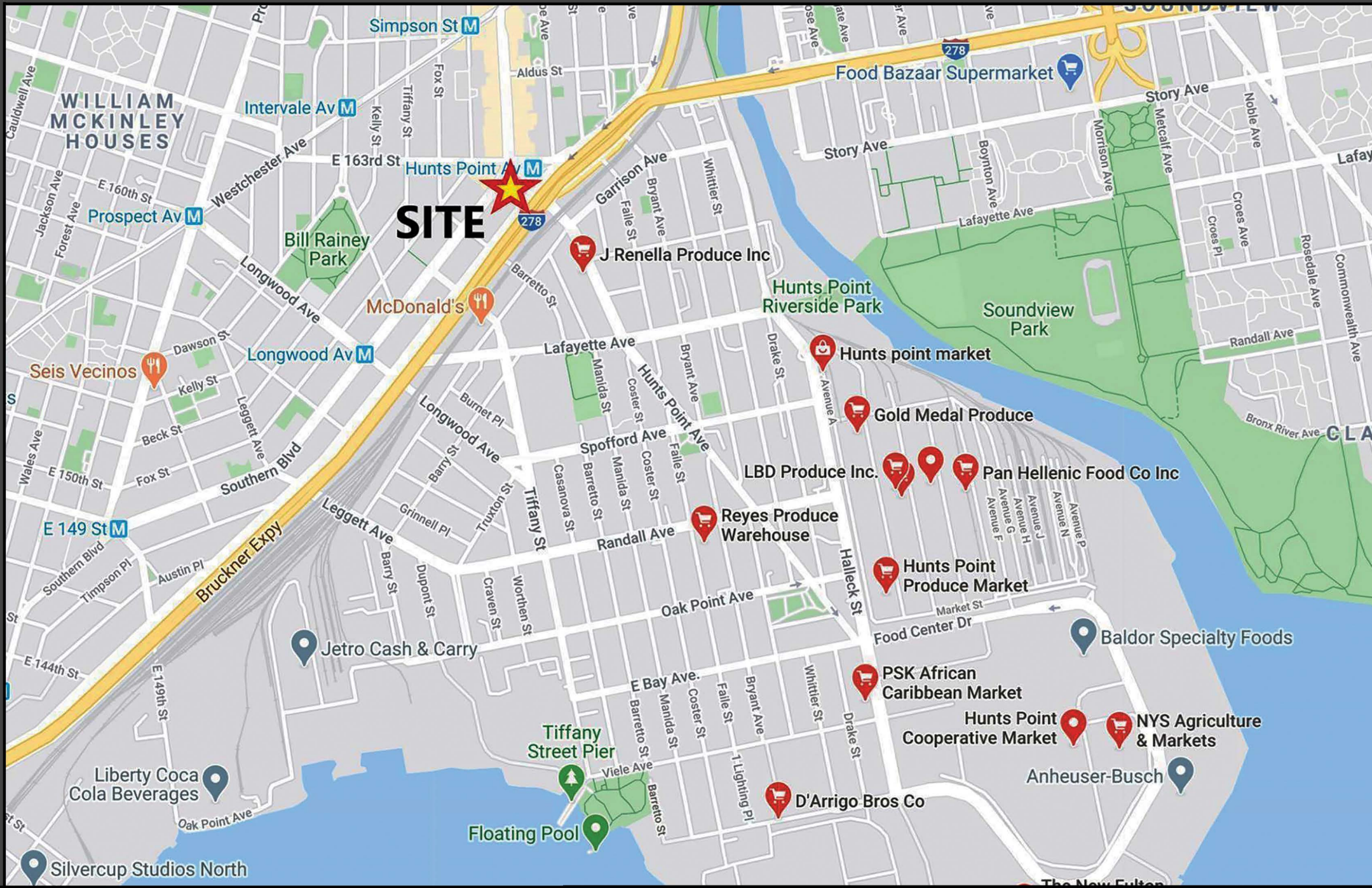
**6** 3,269,585 ANNUAL RIDERS

BRUCKNER BLVD  
38,000 CPD  
BRUCKNER EXPY  
150,000 CPD

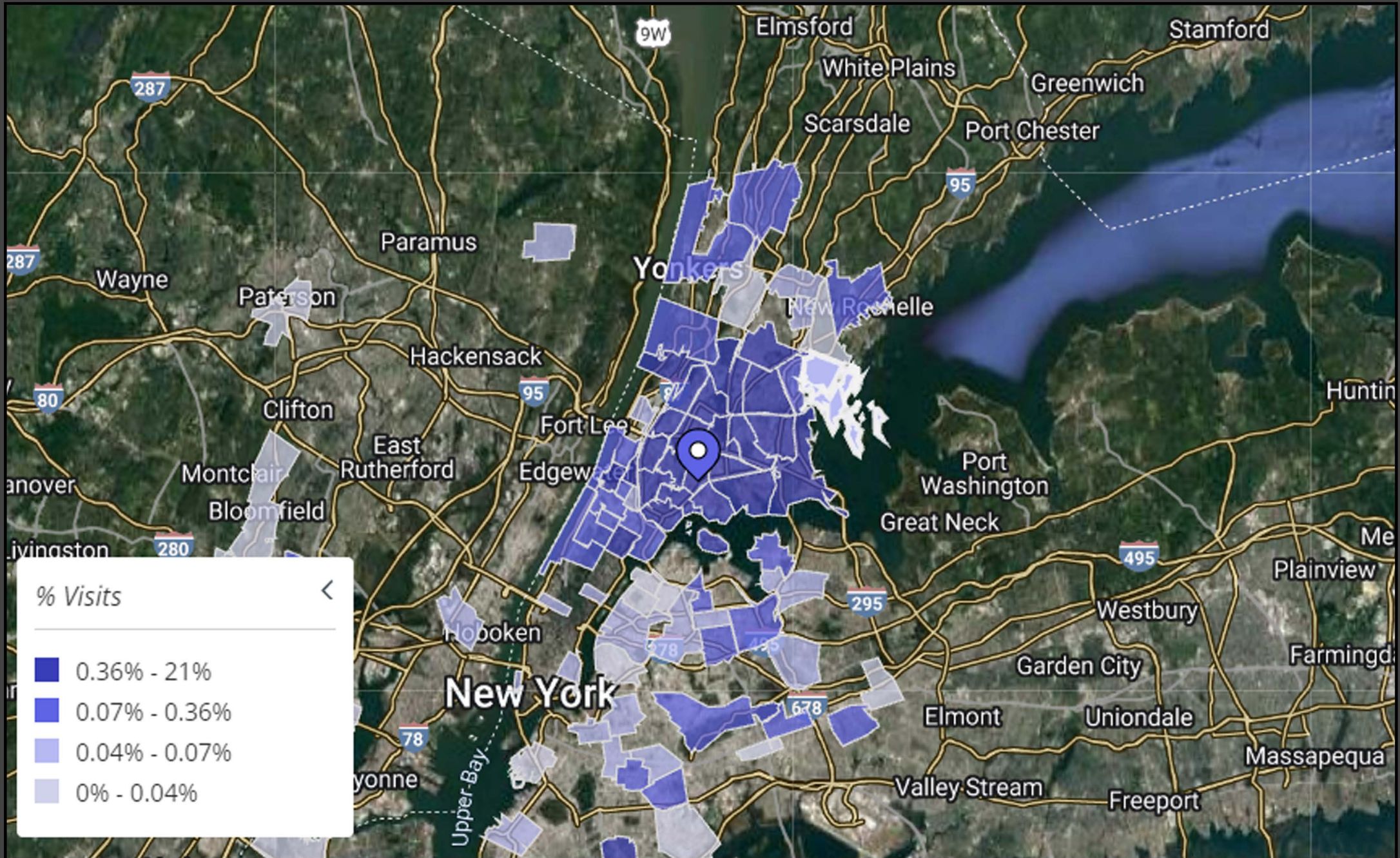
VISIBILITY AND DIRECT ACCESS FROM THE BRUCKNER EXPY.  
BUS LINES Bx5, Bx6 & Bx19 Adj.

INTERSTATE  
**278**













HUNTS POINT AVENUE

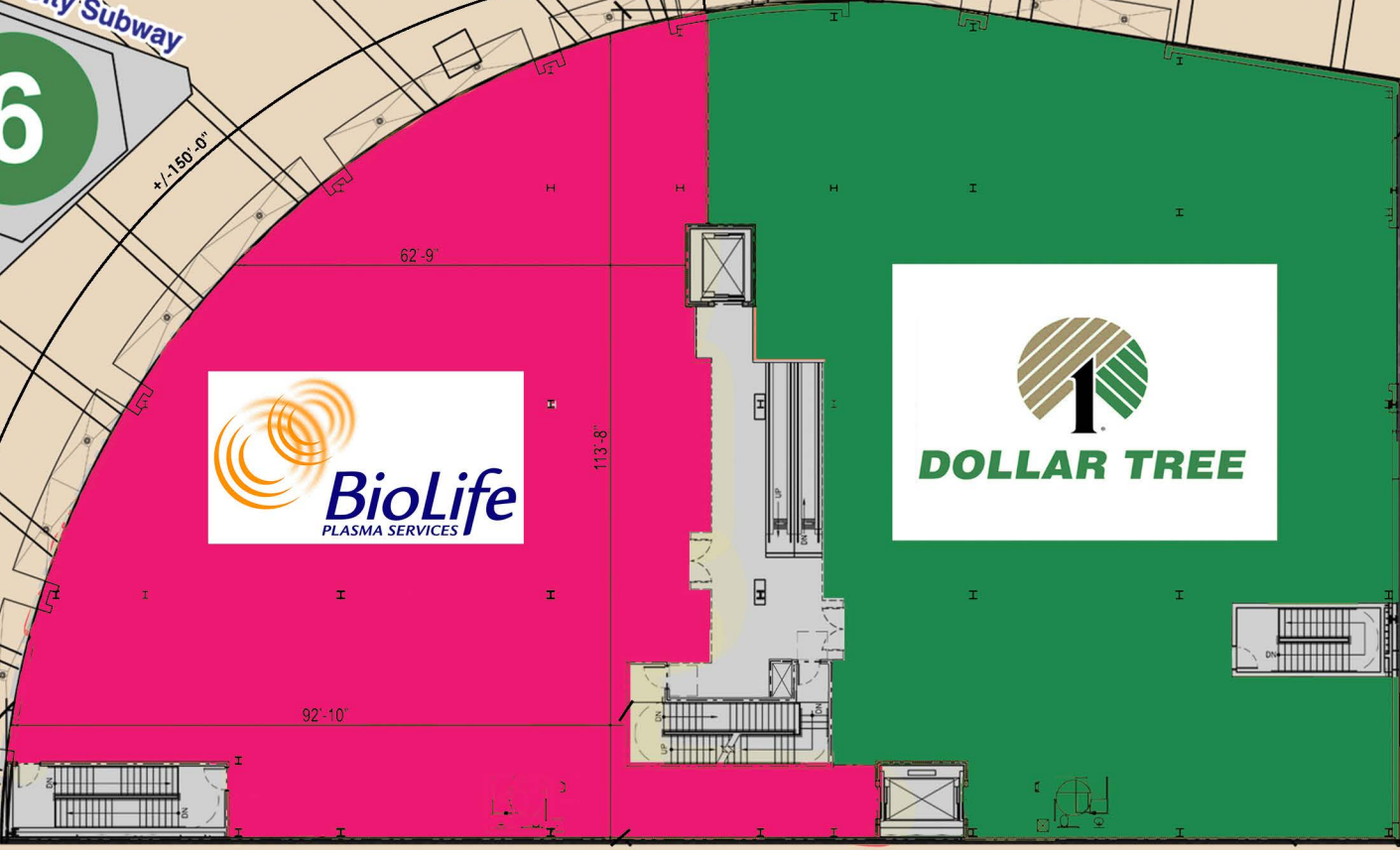


New York City Subway  
MTA



SOUTHERN BOULEVARD

BRUCKNER BOULEVARD



SECOND FLOOR PLAN



