

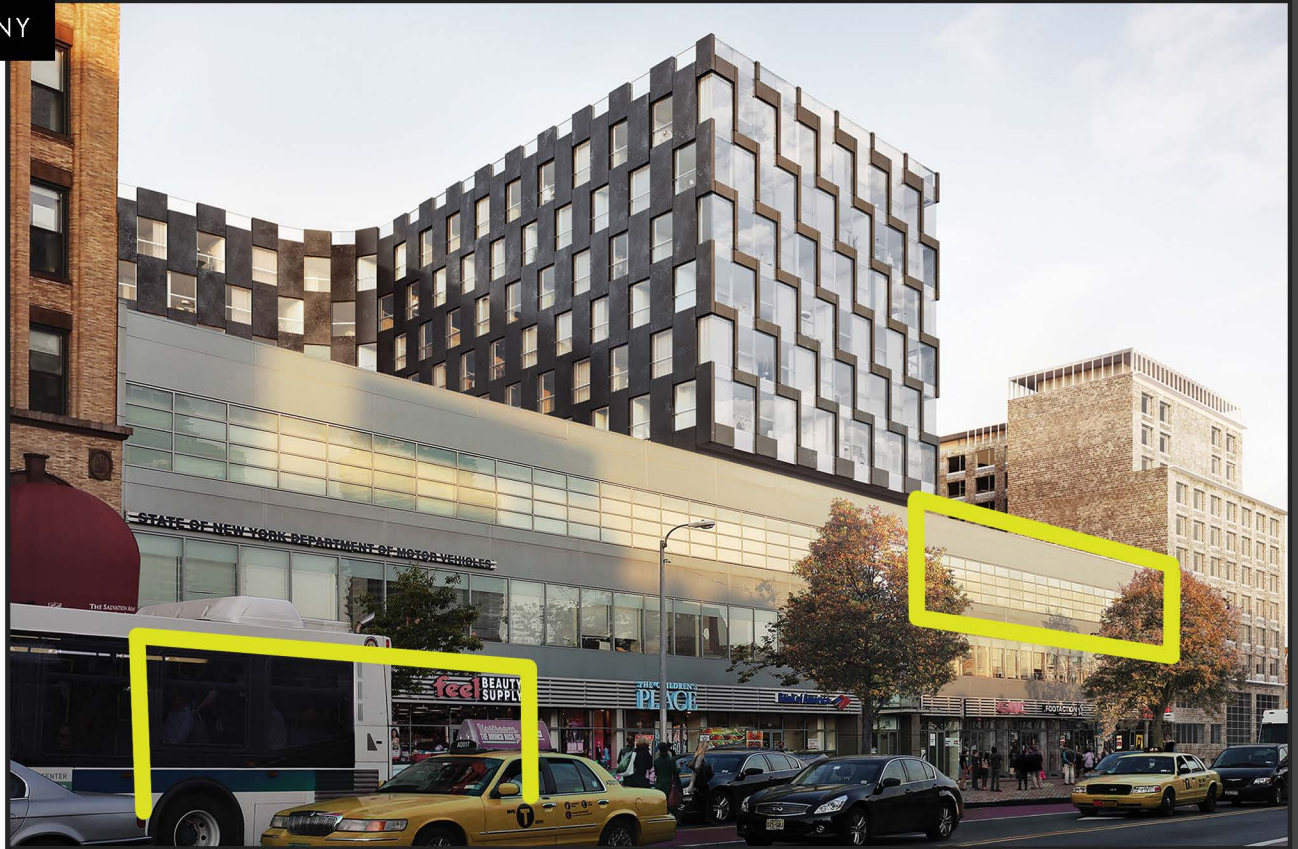
# GOTHAM RETAIL

125TH STREET BETWEEN 3RD AND LEXINGTON, NEW YORK, NY



## AVAILABILITY

<b>PREMISES</b>		
<b>GROUND FLOOR</b>	<b>CEILING HEIGHT</b>	<b>AREA</b>
RETAIL 1	+/-14'-0"	DIVISIBLE +/-6,110 SF
<b>THIRD FLOOR</b>		
THIRD FLOOR	+/-14'-0"	+/-17,206 SF
<b>FRONTAGE</b>		
RETAIL 1		+/-56'-3"



### RADIUS



1 MILE  
3 MILE  
5 MILE

### POPULATION



183,144  
1,300,000  
2,800,000

### AVERAGE HOUSEHOLD INCOME



\$67,747  
\$118,077  
\$110,758

### SHOPPER MEDIAN AGE




35  
36  
36


### # VISITS PER YEAR



405 K




 14 MINS FROM GRAND CENTRAL

 ADJACENT TO 125TH ST SUBWAY ENTRANCE

4 5 6



FOOT TRAFFIC BROUGHT IN BY 125TH ST. SUBWAY 

9.1 MILLION RIDERS ANNUALLY

NEW LUXURY APARTMENT BUILDING ON 126TH STREET 

233 APARTMENTS

# GOTHAM RETAIL



Bed Bath & Beyond, WeWork



National Black Theatre



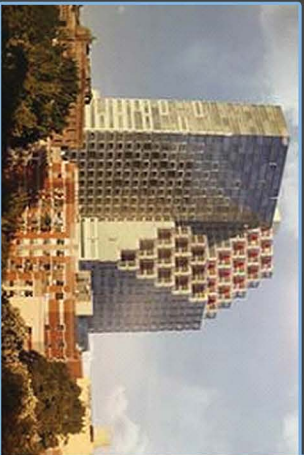
Two towers with nearly 58,000SF built by Greystone



Proton Center



Whole Foods, Burlington, American Eagle



Dust Organization plans to build a mixed-use building including Residential component.



Extell Development 540 +/- 415,000 SF of Apartments, Retail and Community Facility



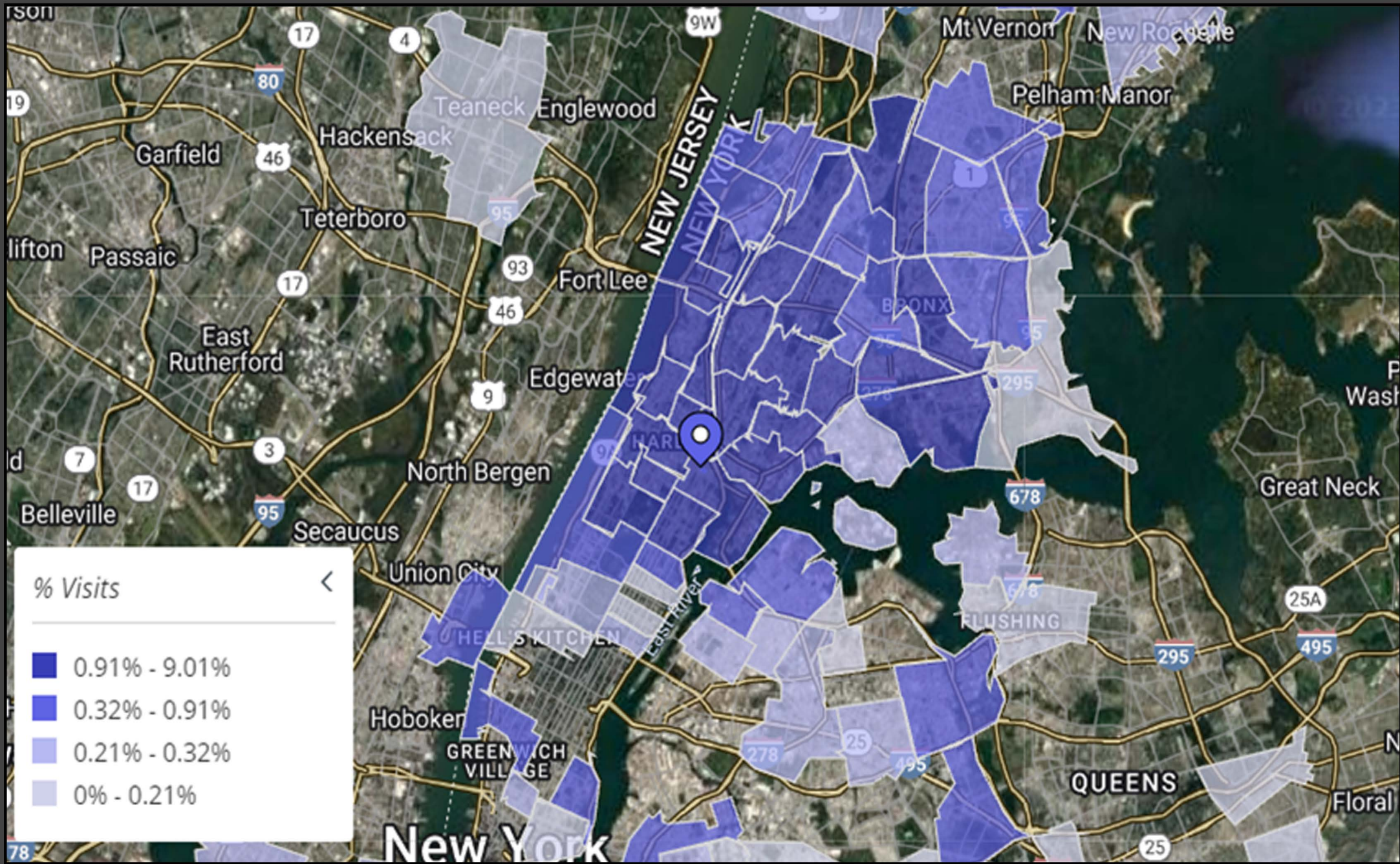
One East Harlem, 400 apartments and Food Bazaar Grocery Store

**MARCUS GARVEY MEMORIAL PARK**

**4.5 & 6 Train at 125th St. & Lexington Avenue 9.1 million annual riders (+3.1% 2013)**

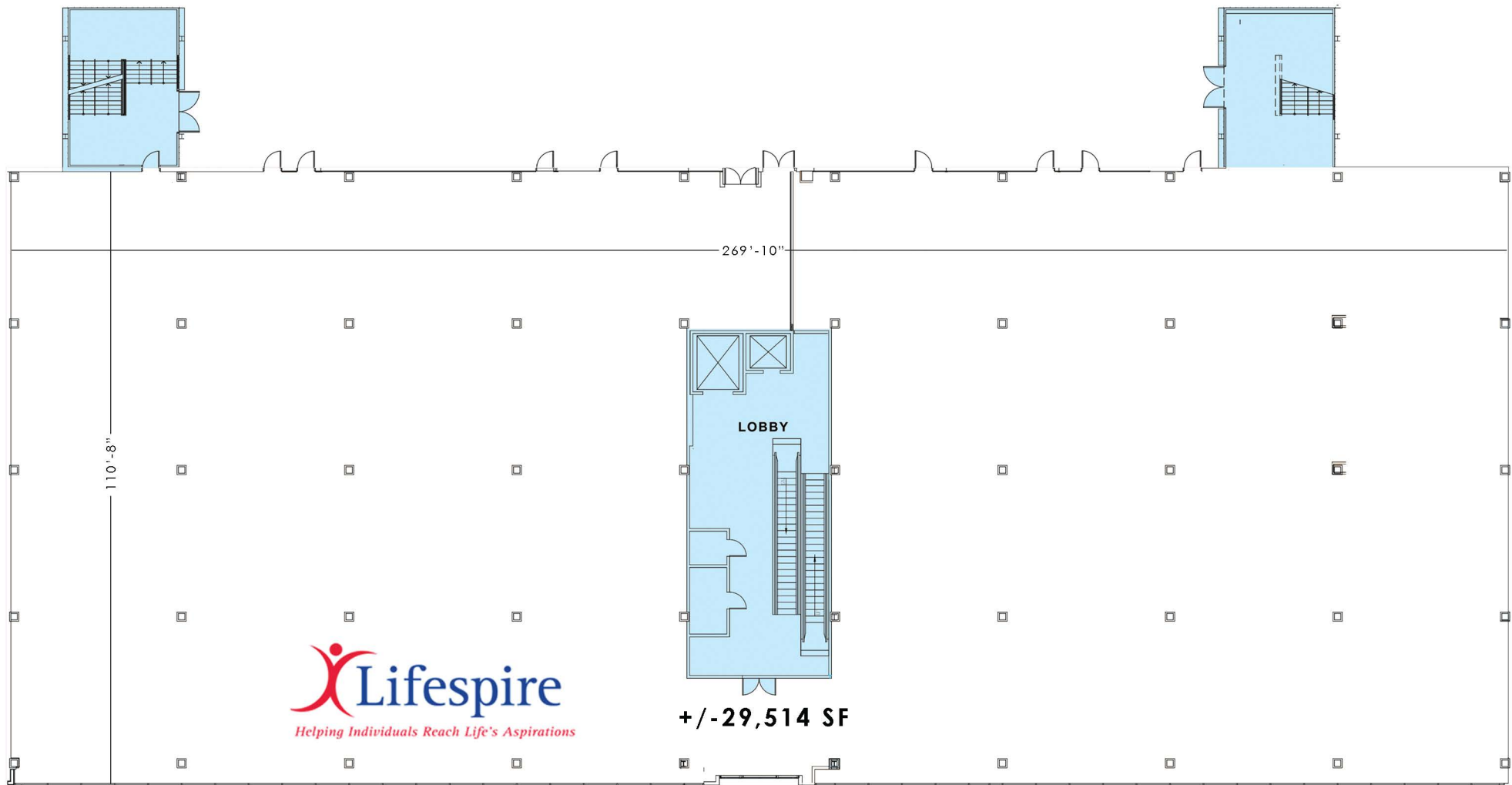
**the smile**

**FOOD 365 SUPERMARKET**



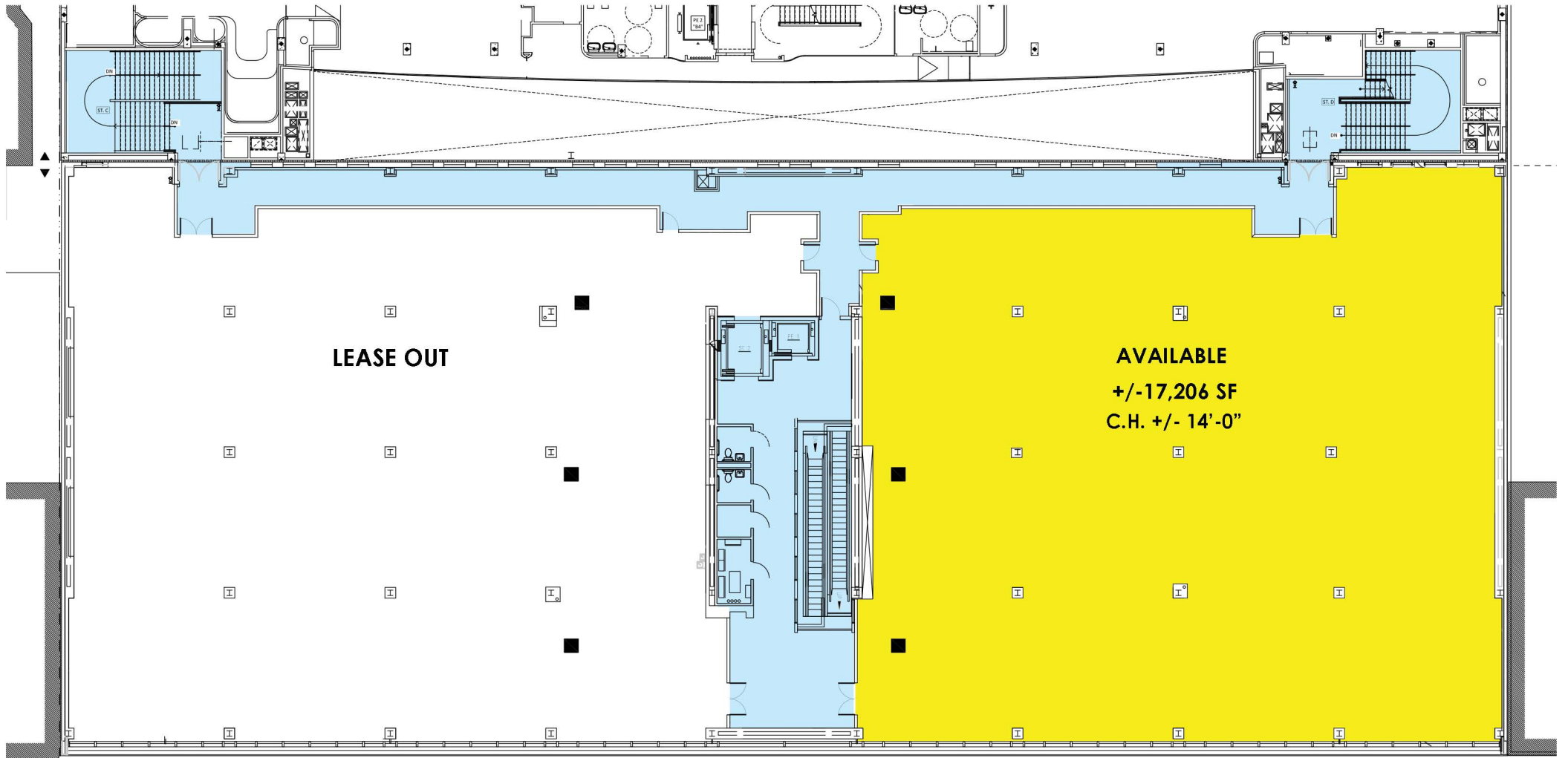


GROUND FLOOR PLAN



**125TH STREET**

**SECOND FLOOR PLAN**



THIRD FLOOR PLAN



GOTHAM RETAIL