

# GOTHAM RETAIL

125TH STREET BETWEEN 3RD AND LEXINGTON, NEW YORK, NY



## AVAILABILITY

### PREMISES

#### GROUND FLOOR

| CEILING HEIGHT        | AREA                  |
|-----------------------|-----------------------|
| RETAIL 1<br>+/-14'-0" | DIVISIBLE +/-4,170 SF |
| RETAIL 2<br>+/-14'-0" | +/-2,199 SF           |

#### THIRD FLOOR

|                          |              |
|--------------------------|--------------|
| AVAILABLE 1<br>+/-14'-0" | +/-17,206 SF |
|--------------------------|--------------|

#### FRONTAGE

|                       |  |
|-----------------------|--|
| RETAIL 1<br>+/-56'-3" |  |
| RETAIL 2<br>+/-24'-0" |  |



#### RADIUS



1 MILE  
3 MILE  
5 MILE

#### POPULATION



191,695  
1,300,000  
2,800,000

#### AVERAGE HOUSEHOLD INCOME



\$61,482  
\$108,760  
\$101,001

#### SHOPPER MEDIAN AGE

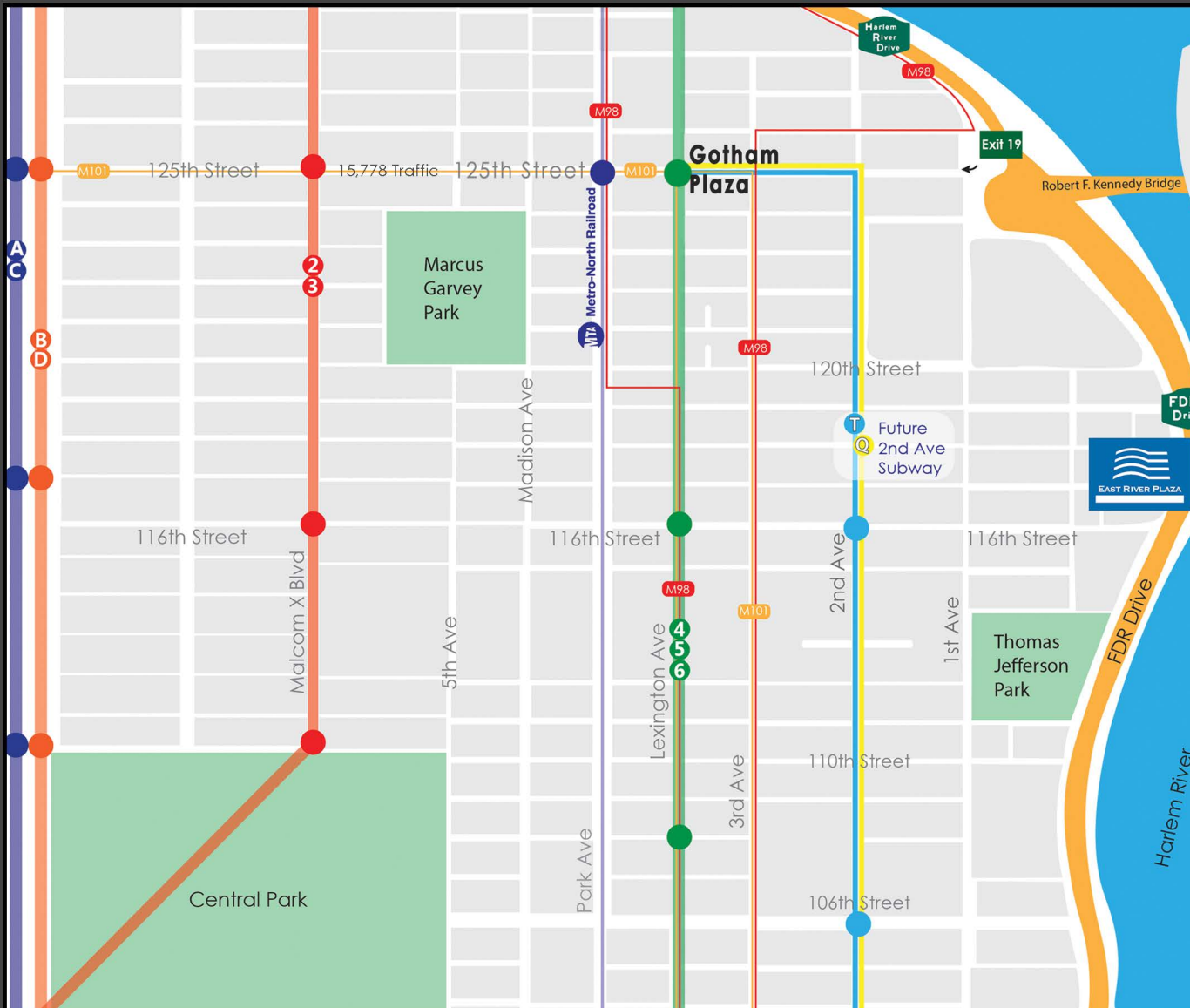


33  
35  
36

#### # VISITS PER YEAR



448 K



14 MINS FROM  
GRAND CENTRAL



ADJACENT TO  
125TH ST SUBWAY  
ENTRANCE

4 5 6



FOOT TRAFFIC  
BROUGHT IN BY  
125TH ST. SUBWAY



9.1 MILLION RIDERS  
ANNUALLY

NEW LUXURY  
APARTMENT BUILDING  
ON 126TH STREET



233 APARTMENTS



Foot Locker



BANK OF AMERICA



TACO BELL

CITYMD  
WALK-IN URGENT CARE

Lifespire



GOTHAM RETAIL





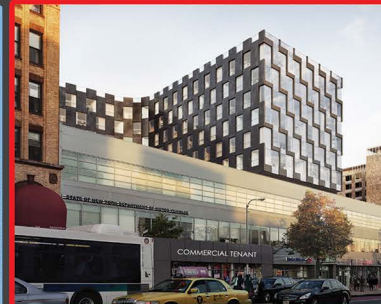
Bed Bath & Beyond, WeWork



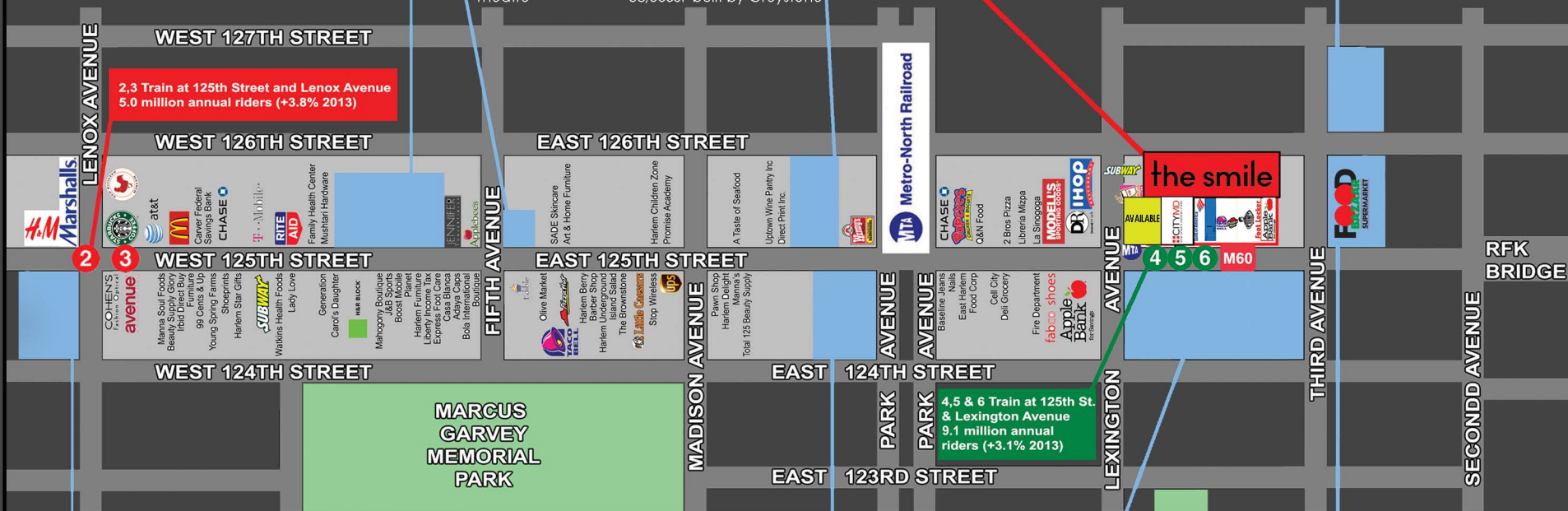
National Black Theatre



Two towers with nearly 58,000SF built by Greystone



Proton Center



Whole Foods, Burlington, American Eagle



Durst Organization plans to build a mixed-use building including Residential component.

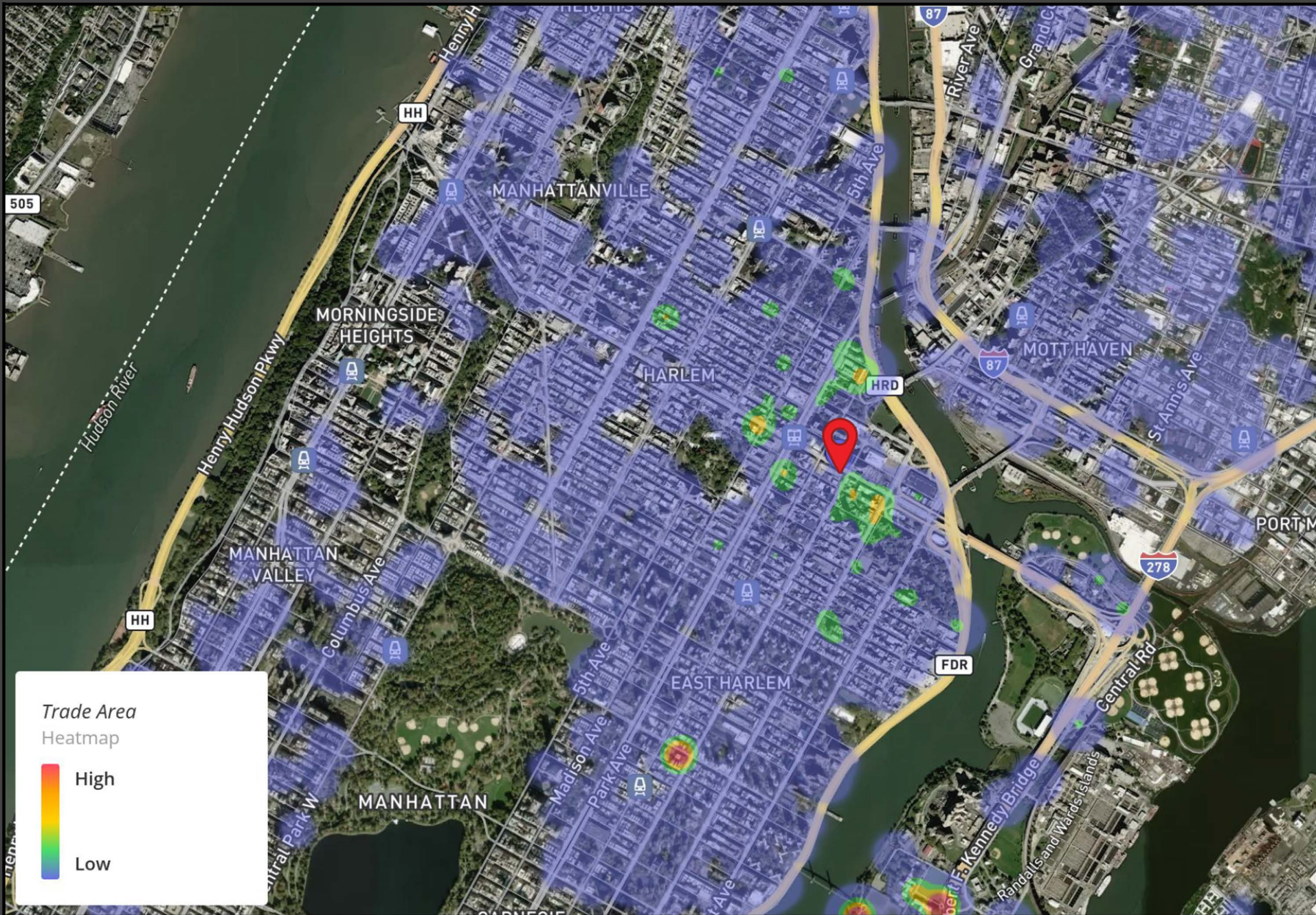


Extell Development 540 +/-415,000 SF of Apartments, Retail and Community Facility



One East Harlem: 400 apartments and Food Bazaar Grocery Store



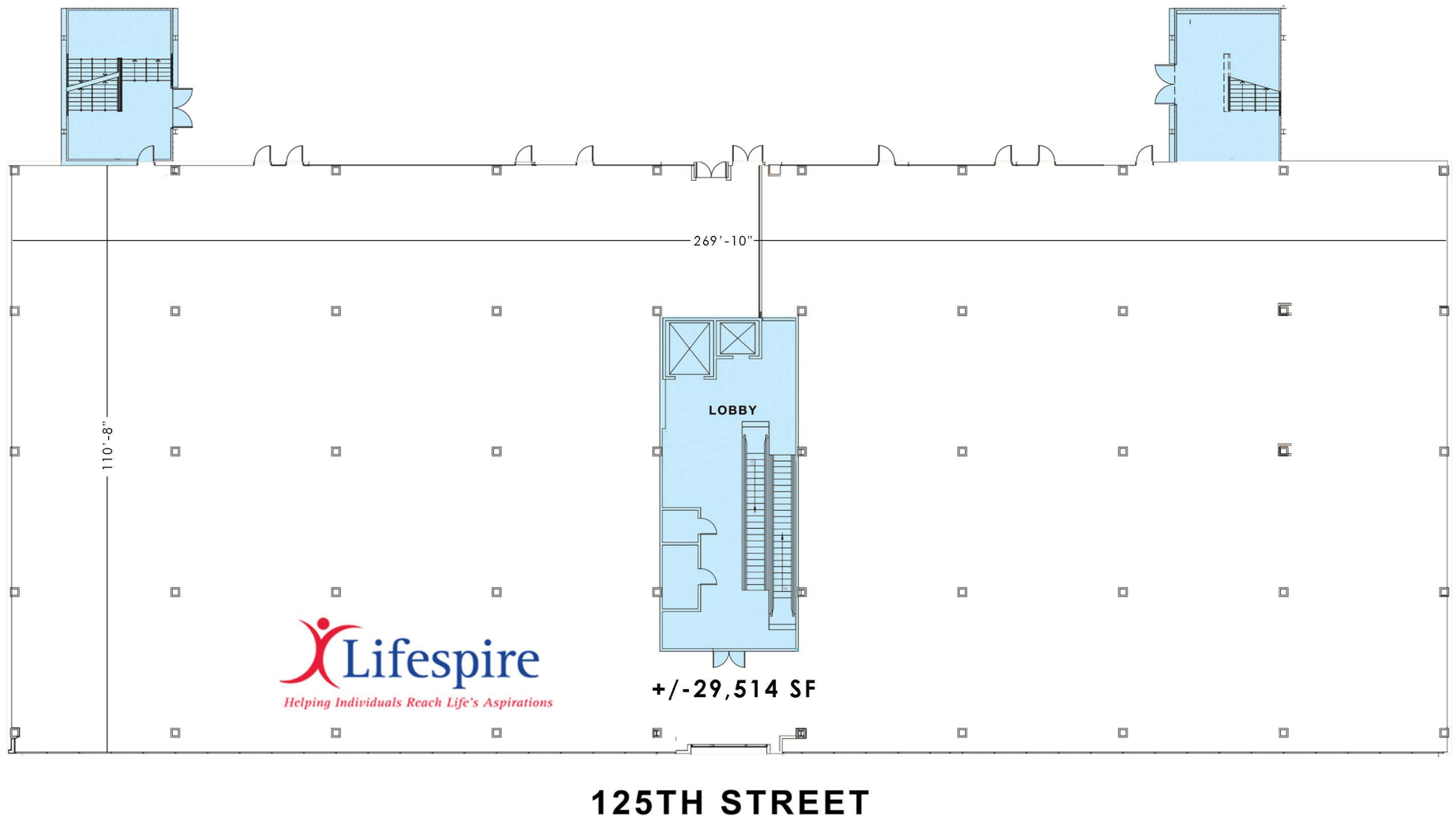


GOTHAM RETAIL





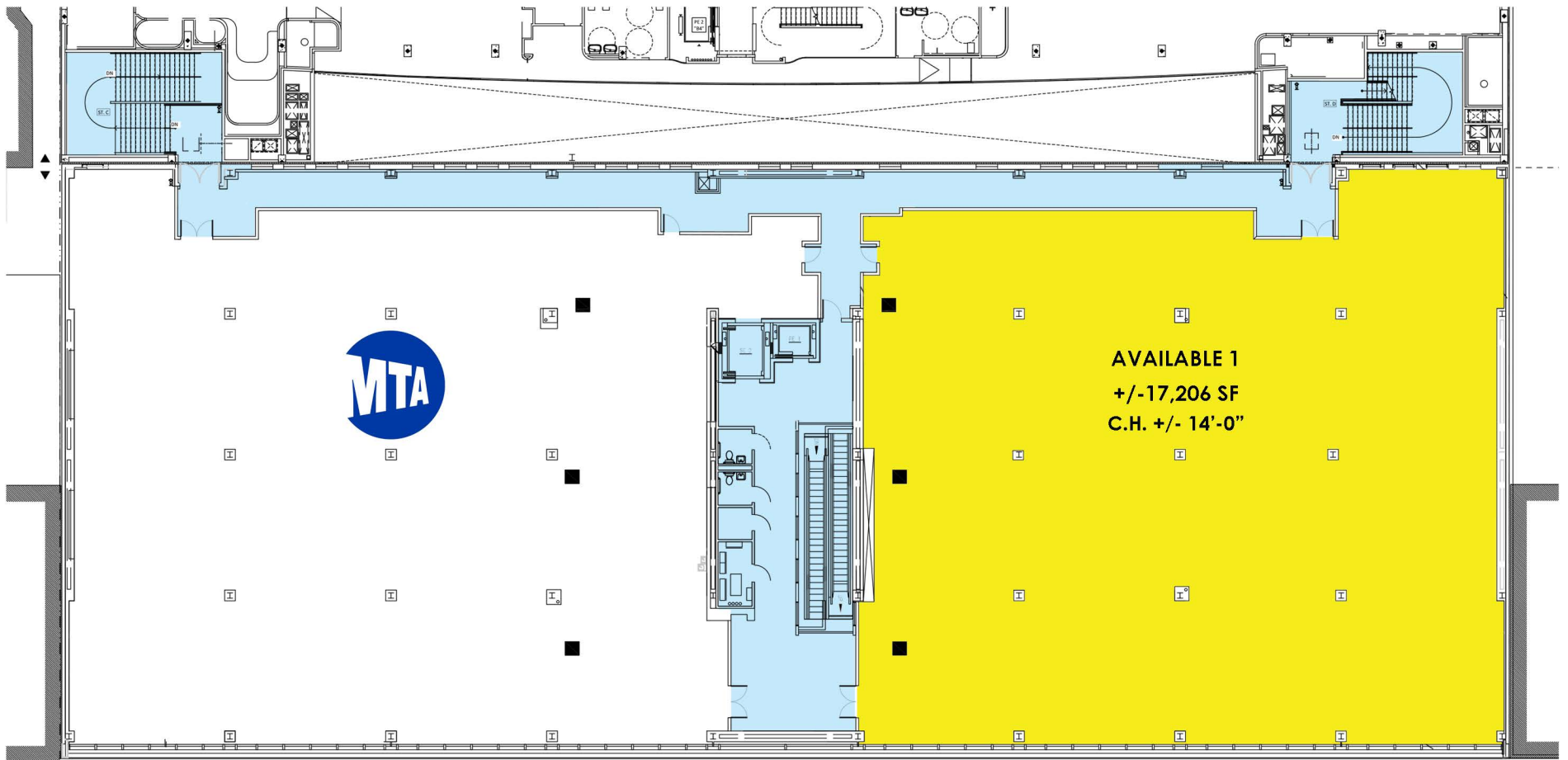
GROUND FLOOR PLAN



SECOND FLOOR PLAN



GOTHAM RETAIL



THIRD FLOOR PLAN



GOTHAM RETAIL